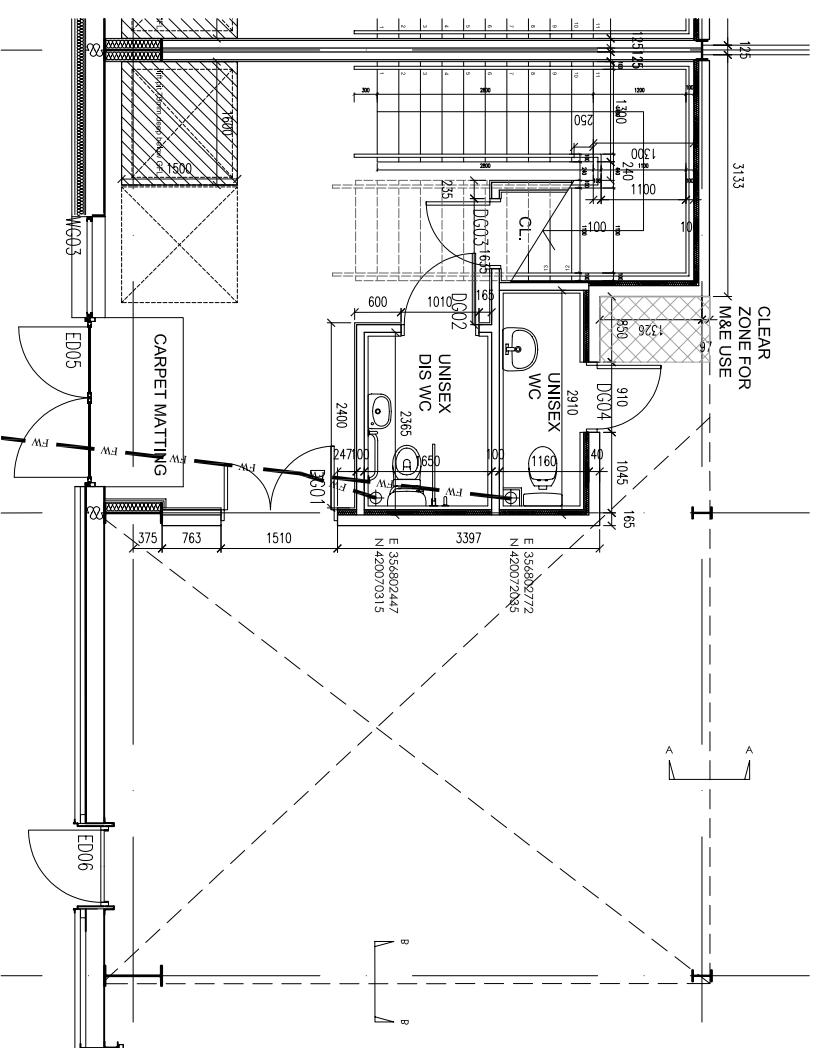
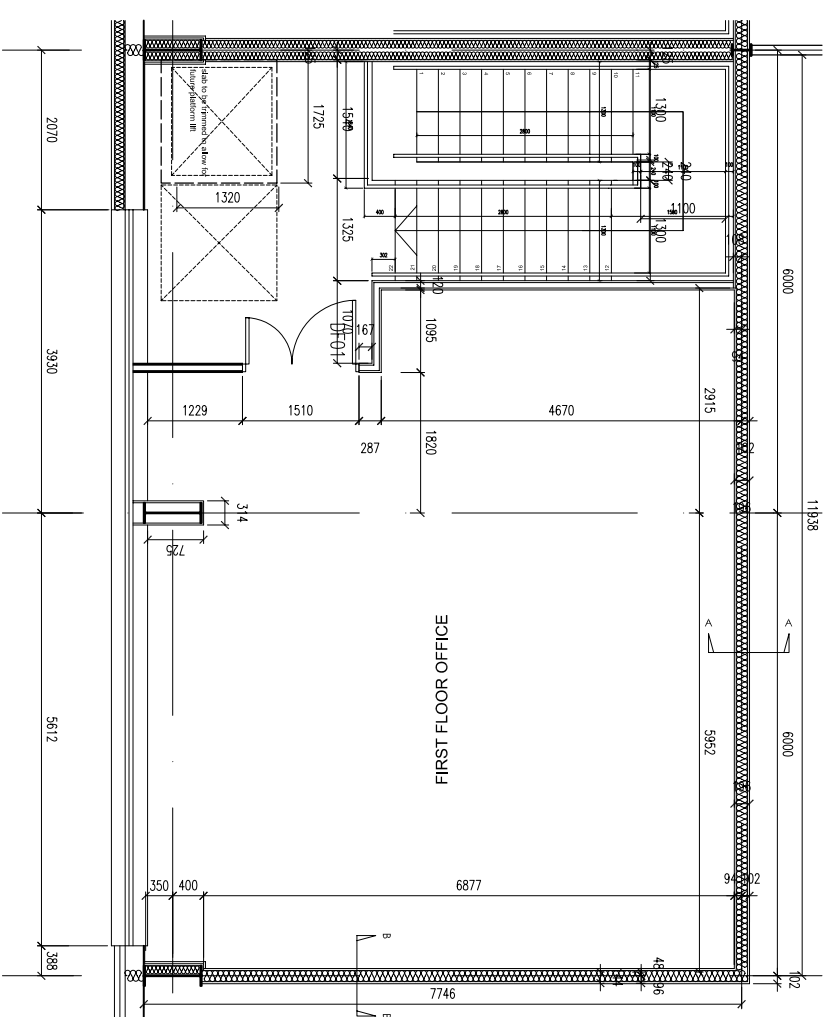


UNIT A GROUND FLOOR
OFFICE CORE LAYOUT - UNIT A1

UNIT A FIRST FLOOR
OFFICE CORE LAYOUT - UNIT A1



UNIT A GROUND FLOOR
OFFICE CORE LAYOUT -
UNIT A2 (REVERSED)



UNIT A FIRST FLOOR
OFFICE CORE LAYOUT -
UNIT A2 (REVERSED)

UNIT A - OFFICE CORE LAYOUTS
SOUTHERN COMMERCIAL

AS BUILT ISSUE

SCALE 1:50 @ A1

SOUTHERN COMMERCIAL
UNIT A - OFFICE CORE LAYOUTS 1:50

REF | DATE | DRAWN BY

Fletcher Architects
Designers & Master Planners

HILL QUAINS
5 JORDANS STREET
WIMBORNE
DORSET DT9 9JH
T +44(0)1561 242 1140
F +44(0)1561 242 1141
office@fletcherarchitects-uk.com
www.fletcherarchitects-uk.com

PROPOSED COMMERCIAL DEVELOPMENT

FOR HELIOS (INDUSTRIAL DEVELOPMENTS) LTD	22.03.07
UNIT A - OFFICE CORE LAYOUTS	22.03.07
STATUS	AB 1:50 (REVERSED)
DRAWN BY	AB 1:50 (REVERSED)
SCALE	1:50 @ A1
1221 - AB103	-