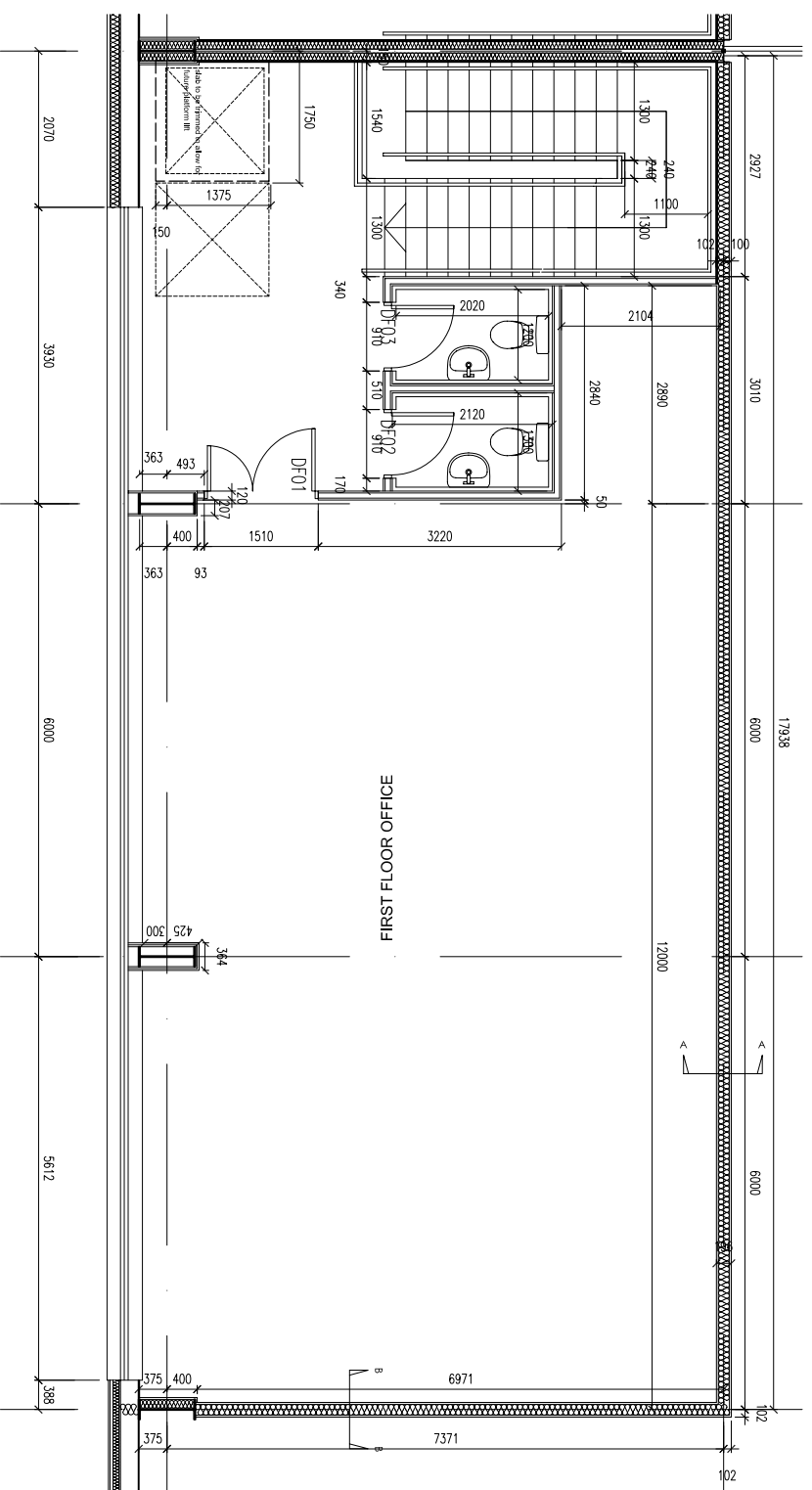


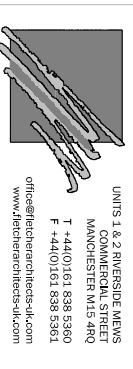
UNIT A5 GROUND FLOOR
OFFICE CORE LAYOUT -
(UNIT A4 REVERSED)



UNIT A5 FIRST FLOOR
OFFICE CORE LAYOUT -
(UNIT A4 REVERSED)

SOUTHERN COMMERCIAL
UNIT A - OFFICE CORE LAYOUTS 1:50

REV / DATE | DRAWN BY



FletcherArchitects
Designers & Master Planners

UNITS 1 & 2 RIVERSIDE MEWS
COMMERCIAL STREET
MANCHESTER M13 9NQ
T +44(0)161 838 5360
F +44(0)161 838 5361
office@fletcherarchitects-uk.com
www.fletcherarchitects-uk.com

PROPOSED COMMERCIAL DEVELOPMENT			
for HELIOS (INDUSTRIAL DEVELOPMENTS) LTD			
UNIT A - OFFICE CORE LAYOUTS			
STATUS	AB	1 - 3000	22.03.07
DRAWN:	RCT	CHECKED BY:	1.30.09.A1
1221 - AB104		-	