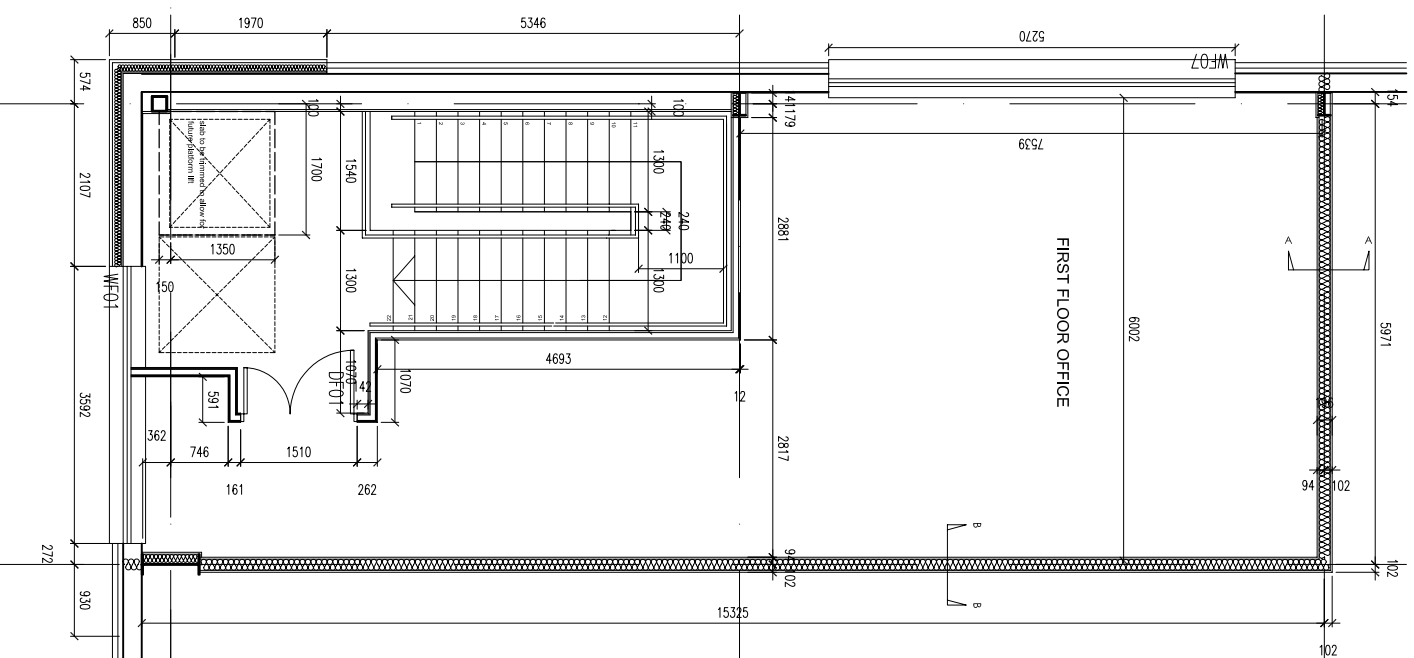
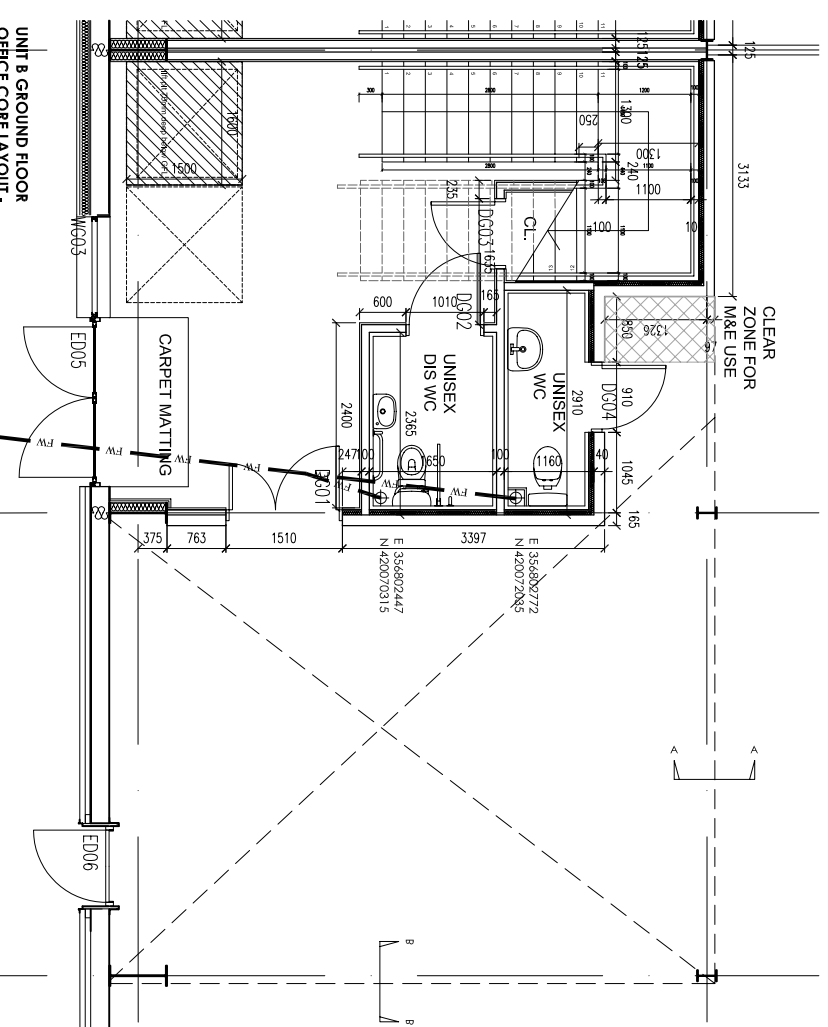


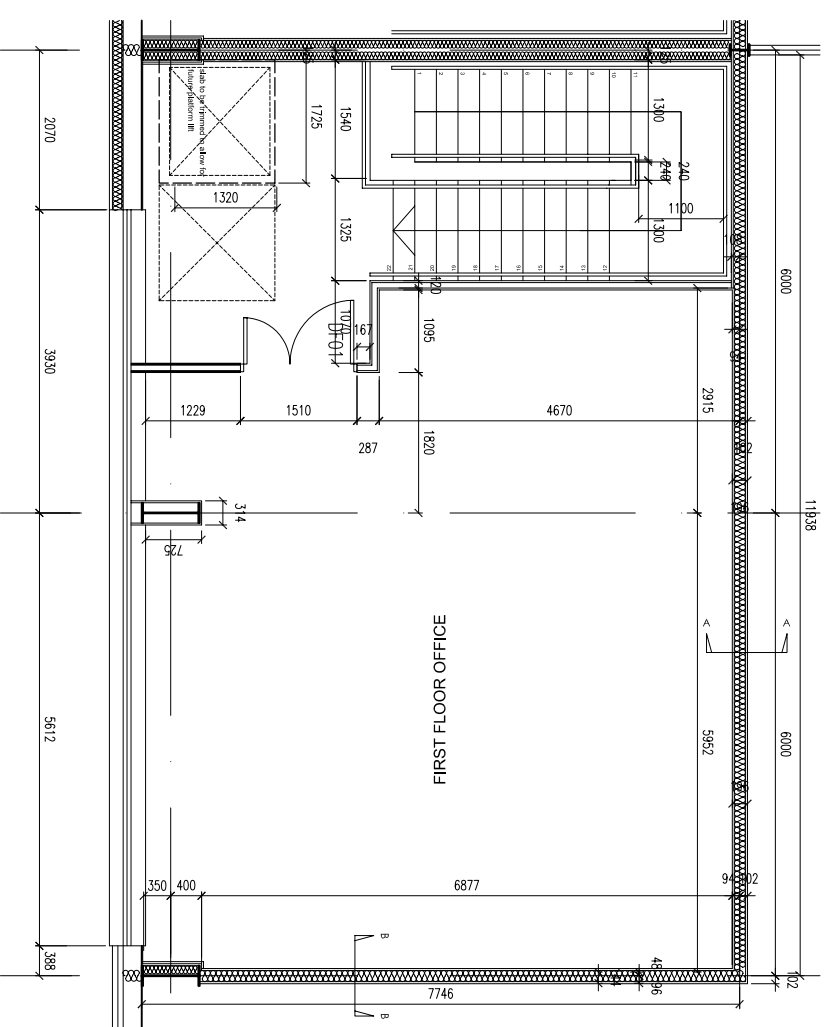
UNIT B GROUND FLOOR
OFFICE CORE LAYOUT - UNIT B5



UNIT B FIRST FLOOR
OFFICE CORE LAYOUT - UNIT B5



UNIT B GROUND FLOOR
OFFICE CORE LAYOUT -
UNIT B2
(REVERSED)



UNIT B FIRST FLOOR
OFFICE CORE LAYOUT -
UNIT B2
(REVERSED)

SOUTHERN COMMERCIAL
UNIT B - OFFICE CORE LAYOUTS 1:50

Rev / Date | Scale |

FletcherArchitects
Designers & Master Planners

UNITS 1 & 2 RIVERSIDE MEWS
COMMERCIAL STREET
MANCHESTER M13 9NQ
T +44(0)161 838 5360
F +44(0)161 838 5361
office@fletcherarchitects-uk.com
www.fletcherarchitects-uk.com

PROPOSED COMMERCIAL DEVELOPMENT
for HELIOS (INDUSTRIAL DEVELOPMENTS) LTD
UNIT B - OFFICE CORE LAYOUTS
STATUS: AB | 1:50 | 22.03.07
DRAWN: RCT | CHECKED BY: 1:50@A1
1221 - AB113 -