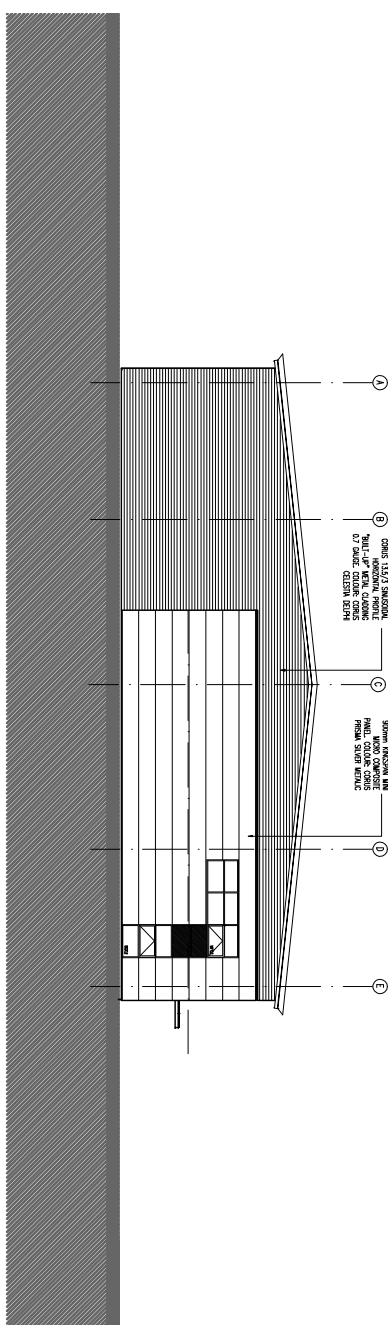
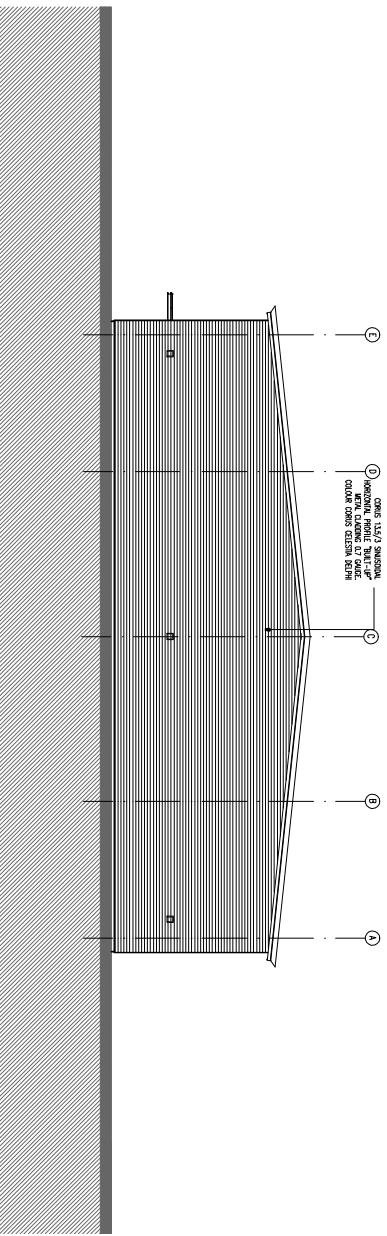


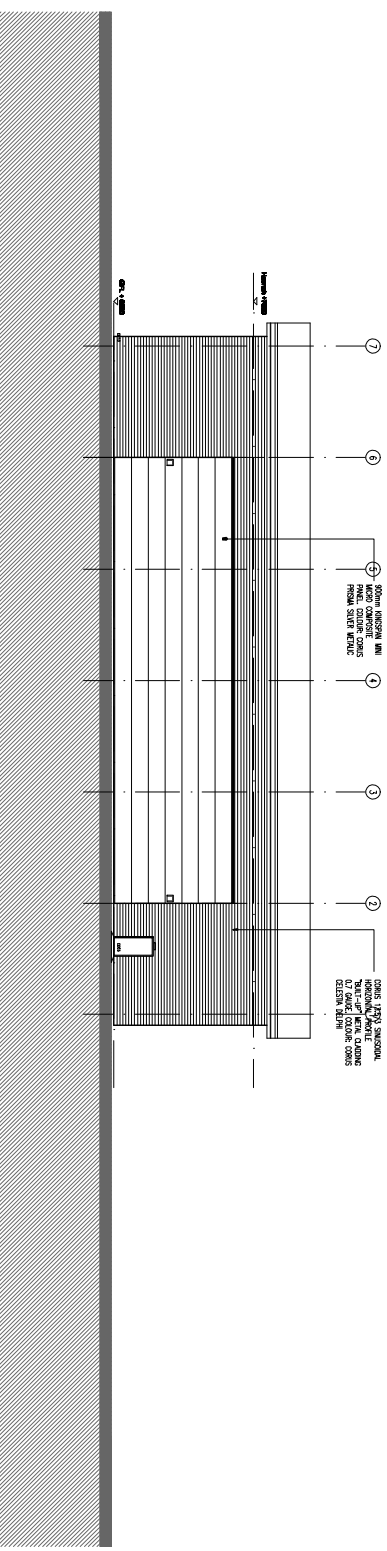
**WEST ELEVATION**  
(ALONG GL B)



**NORTH ELEVATION**  
(ALONG GL 1)



**SOUTH ELEVATION**  
(ALONG GL 7)



**EAST ELEVATION**  
(ALONG GL A)

**SOUTHERN COMMERCIAL**  
 UNIT F - PROPOSED GA PLAN 1:200

**UNIT F - ELEVATION**  
**SOUTHERN COMMERCIAL**

**AS BUILT ISSUE**

SCALE 1:200 @ A1

REV. | DATE. | SCALE BY

**FletcherArchitects**  
 Designers & Master Planners

UNITS 1 & 2 RIVERSIDE LODGE  
 COMMERCIAL STREET  
 MANCHESTER M15 4RQ  
 T +44(0)161 888 1390  
 F +44(0)161 888 1391  
 info@fletcherarchitects-uk.com  
 www.fletcherarchitects-uk.com

PROPOSED COMMERCIAL DEVELOPMENT  
 for HELIOS (INDUSTRIAL DEVELOPMENTS) LTD

UNIT F - ELEVATIONS

STATUS	AS BUILT	DATE	30.05.07
DRAWN BY	RCI	CHECKED BY	1:200GA1
<b>1221 - AB141</b>			