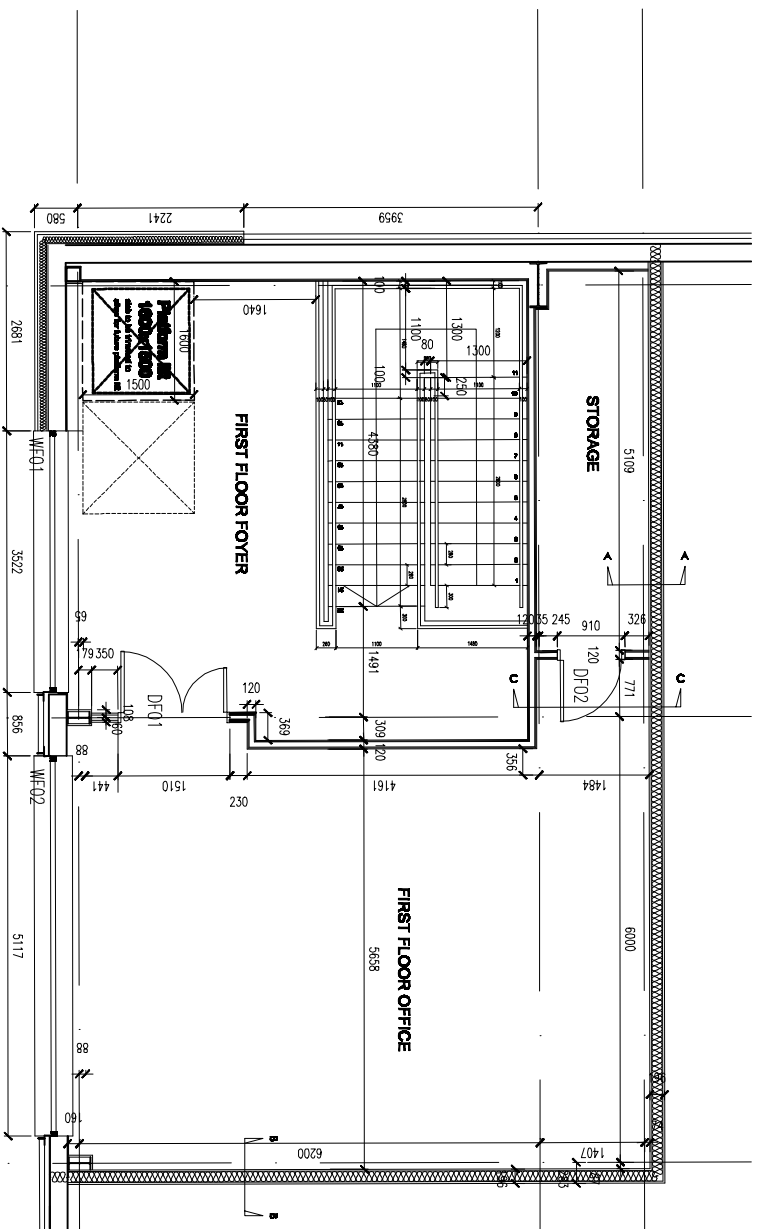


UNIT G GROUND FLOOR OFFICE CORE LAYOUT



UNIT G FIRST FLOOR OFFICE CORE LAYOUT

UNIT G - OFFICE CORE BLOCKWORK/STUD SETTING OUT
 SOUTHERN COMMERCIAL

SOUTHERN COMMERCIAL
 UNIT G - OFFICE CORE LAYOUT 1:50

KEY | DATE | SCALE | BY

Fletcher Architects
 Designers & Master Planners

HILL QUAYS
 5 JORDAN STREET
 MANCHESTER
 M2 1LN
 T +44(0)161 242 1140
 F +44(0)161 242 1141
 o:office@fletcherarchitects-uk.com
 www.fletcherarchitects-uk.com

PROPOSED COMMERCIAL DEVELOPMENT	1221 - AB153
FOR HELIOS (INDUSTRIAL DEVELOPMENT) LTD	
UNIT G - OFFICE BLOCKWORK/STUD SET OUT	
STATUS: AS 1 - COMMENCEMENT	
DATE: 23.07.07	
DRAWN BY: RCT / CHECKED BY: 1:50/041	

AS BUILT ISSUE

SCALE 1:50 @ A1